



- Industry News
- Events
- Product News
- This Issue: Summer 10
- Daily News Feeds
- Drug Discovery
- Business
- Chemistry
- Enabling Technologies
- Informatics
- Personalised Medicine
- Screening
- Therapeutics
- Application Notes
- Posters
- PDF Archive
- DDW Research Store

Home | Industry News

Archive | RSS

Research To Develop Lab-on-chip System

Sept 2010

At the Engineering in Medicine and Biology Conference in Buenos Aires, imec and its project partners announce the launch of the European Seventh Framework Project MIRACLE, aimed at developing an operational lab-on-chip for the isolation and detection of circulating and disseminated tumor cells in blood.

The new lab-on-chip is an essential step towards faster and cost-efficient diagnosis of cancer.

Detection of circulating and disseminated tumor cells in blood is a promising methodology to diagnose cancer dissemination or to follow up cancer patients during therapy. Today, the detection analyses of these cells are performed in medical laboratories requiring labor intensive, expensive and time-consuming sample processing and cell isolation steps. A full tumor cell detection analysis can take more than a day. A lab-on-chip, integrating the many processing steps, would enable a faster, easy-to-use, cost-effective detection of tumor cells in blood. They are therefore labor-saving and minimally invasive, increasing the patient's comfort and the efficiency of today's healthcare.

In a preceding joint project by some of the partners (MASCOT FP6-027652), individual microfluidic modules for cell isolation, cell counting, DNA amplification and detection have been developed. Based on this expertise and strengthened by additional partners, the development of a fully automated, lab-on-chip platform to isolate, count and genotype CTCs is envisaged within the framework of the MIRACLE project. For genotyping, genetic material (i.e. the mRNA) will be extracted from the cells and multiple cancer related markers will be amplified based on multiplex ligation dependent probe amplification (MLPA) followed by their detection using an array of electrochemical sensors. Full integration of all steps requires innovative research and processing steps that need a combination of the multidisciplinary and unique expertise of the different project partners (ranging from microfluidics to interfacing, miniaturization, and integration skills). The resulting lab-on-chip tumor detection system will be well ahead of the current state-of-the-art, revolutionizing cancer diagnostics and individualized theranostics.

Within the framework of the MIRACLE project, imec as project coordinator, collaborates with the Universitat Rovira I Virgili (Spain), the Institut für Mikrotechnik Mainz, AdnaGen, ThinXXs and Consultech (Germany), MRC Holland (The Netherlands), the Oslo University Hospital (Norway), the KTH Royal Institute of Technology, Multi-D and Fujirebio Diagnostics (Sweden), ECCO - the European CanCER Organisation and ICsense (Belgium) and Labman (UK). The project aims at developing a fully automated and integrated microsystem providing the genotype (gene expression profile) of CTCs and DTCs starting from clinical samples. MIRACLE is partly funded by the European Commission (FP7-ICT-2009.3.9). More information on the project is available on the web: www.miracle-fp7.eu

News release can be downloaded at http://www2.imec.be/be_en/press/imec-news/miracle.html

About imec
Imec performs world-leading research in nanoelectronics. Imec leverages its scientific knowledge with the innovative power of its global partnerships in ICT, healthcare and energy. Imec delivers industry-relevant technology solutions. In a unique high-tech environment, its international top talent is committed to providing the building blocks for a better life in a sustainable society.



SEARCH

Advanced

Welcome: **Guest**
Login | Register

Forgotten Password?

DRUG DISCOVERY WORLD RESEARCH STORE

YOUR ONE STOP RESEARCH PORTAL

Click here for information



FDSS/ μ CELL

NEW

Cell-based Assay Plate Reader

- Fast
- Cost-effective
- Easy to use

HAMAMATSU
PHOTON IS OUR BUSINESS
sales.hamamatsu.com

PERSONALIZED and Translational Medicine conference!!

Imec is headquartered in Leuven, Belgium, and has offices in Belgium, the Netherlands, Taiwan, US, China and Japan. Its staff of more than 1,750 people includes over 550 industrial residents and guest researchers. In 2009, imec's revenue (P&L) was 275 million euro. Further information on imec can be found at www.imec.be.

Optimizing Low Volume Transfers Using Automated Liquid Handling



View our technical note featuring the Thermo Scientific Matrix PlateMate 2x3

Thermo
SCIENTIFIC

Society for Biomolecular Sciences **SBS**

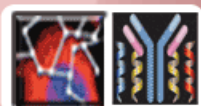
Biomolecular Screening Symposium

Advanced Applications
Across Academia,
Government
& Industry

Sheraton Imperial
Hotel and
Convention Center
Durham, NC, USA

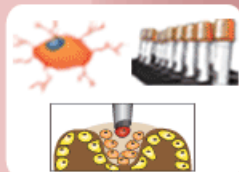
October 18-19, 2010

Co-located Events



Cancer Proteomics
and
Advances in Antibody
& Peptide Therapeutics

8 - 9 June 2010
Berlin, Germany



Stem Cells Europe,
World Biobanking
Summit &
Cellular Therapy
Summit

24 - 25 August 2010
Edinburgh, Scotland

What's in the Summer 10 edition of DDW

Tracking HTS Assay Development Time

Enterprise ELNS as a Foundation for Preclinical Drug Development

Biomarkers Make Their Mark

3D Cell Culture - easier said than done

New Trends and Therapeutic Approaches for Diabetic Retinopathy

Companion Diagnostics in the Pharmaceutical Industry

Related Articles

- Fortran Compiler Released
- New Centre At University Of Aberdeen
- ImmunoSolv & Grampian BioConsultants Merge
- BioServe Introduces the BioServe Network
- Geospiza & SAIC-Frederick Collaborate